

# — Design for SALE —

mail: [info@fulit.eu](mailto:info@fulit.eu)

*AC LED modules*

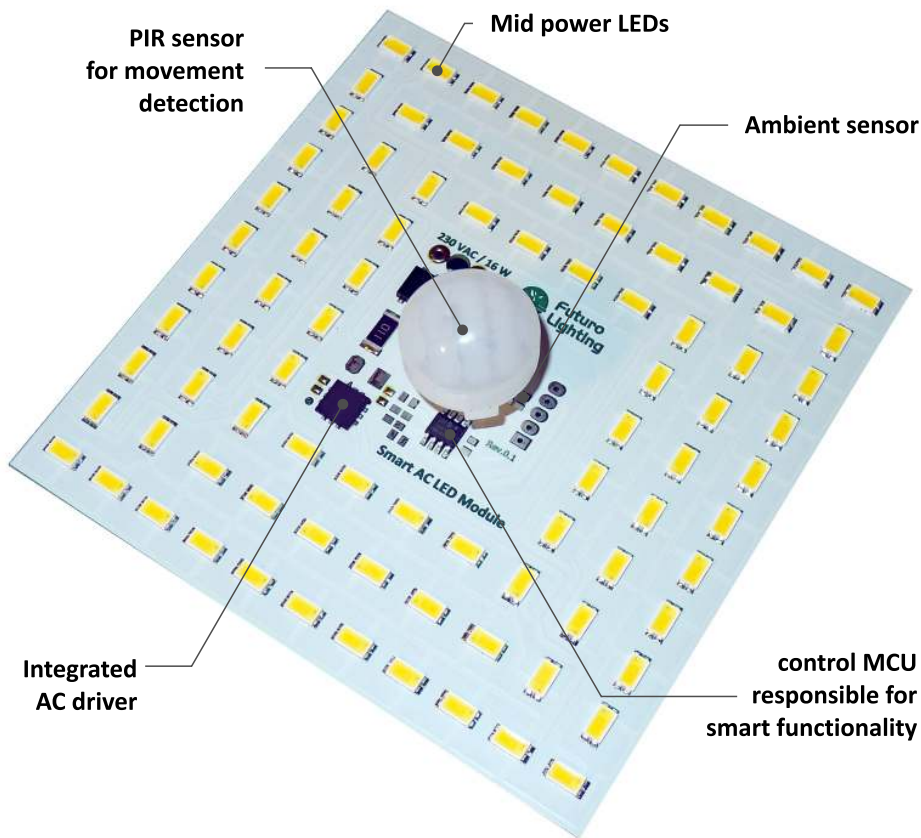
- self made LED fixtures
- easy to use
- compact
- implemented driver
- thermal protected
- smart functionality



**Futuro  
Lighting**  
*design*

# Smart AC LED Module

*no external driver all inside*



## Brief specification:

Vin=230 VAC

Pin=13 W max, PF > 0.97

Pin stdby < 0,5 W

CCT= 4000K or 3000K

Lumen flux: > 1000 lm

Dimensions: 100x100x15mm, IP20

Connection: soldering PCB pins

Note: To be used in fixtures Class I

## control:

- Fade-in and fade out
- implemented PIR sensor (detection of movement)
- Ambient sensor on board (day/night recognition)

## Settings:

- (factory preprogrammed programming card on request)
- hold time (10sec -10 min)
- ambient threshold
- Special (on request)
- maximum intensity (80-100%)
- minimum intensity (0-50%)
- step down intensity (0-80%)

# AC LED Module 12W

*no external driver all inside*

## **Brief specification:**

Vin=230 VAC

Pin=13 W max, PF > 0.97

CCT= 4000K or 3000K

Lumen flux: > 1000 lm

Dimensions: 100x100x5mm, IP20

Connection: soldering PCB pins

Note: To be used in fixtures Class I

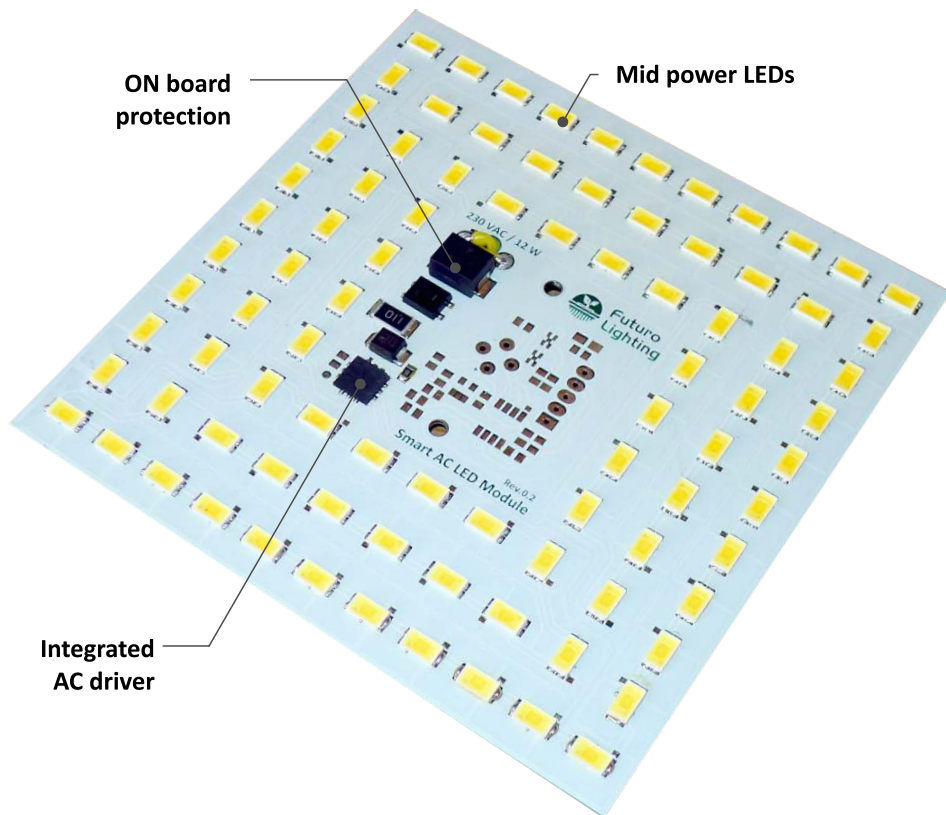
## **Dimming:**

- Phase dimming 10-100%  
(leading or trailing edge)

## **Notes:**

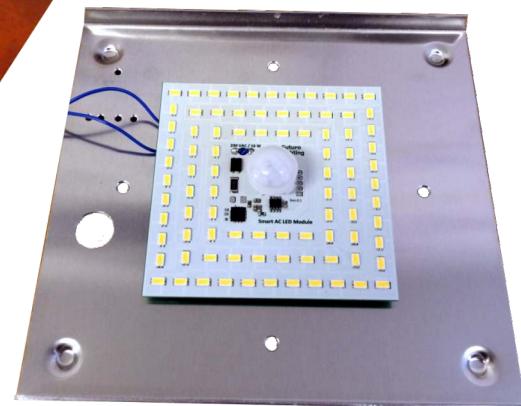
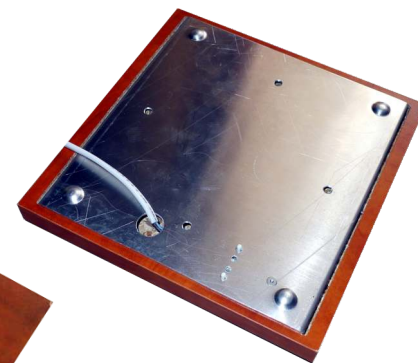
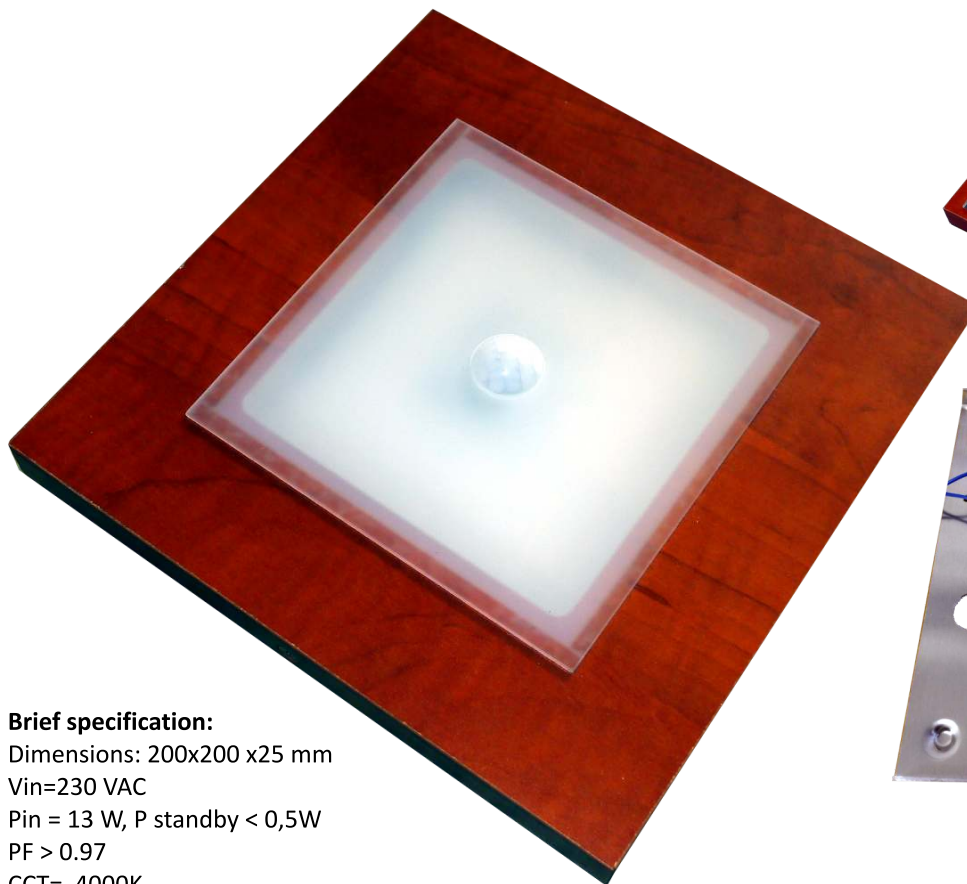
Requires external 1A slow fuse

Requires Al pad for driver cooling



# Smart AC LED Module 12W

*Application example*



## **Brief specification:**

Dimensions: 200x200 x25 mm

Vin=230 VAC

Pin = 13 W, P standby < 0,5W

PF > 0.97

CCT= 4000K

Class I fixture, IP20

# AC LED Module 12W

*Application example*



## **Brief specification:**

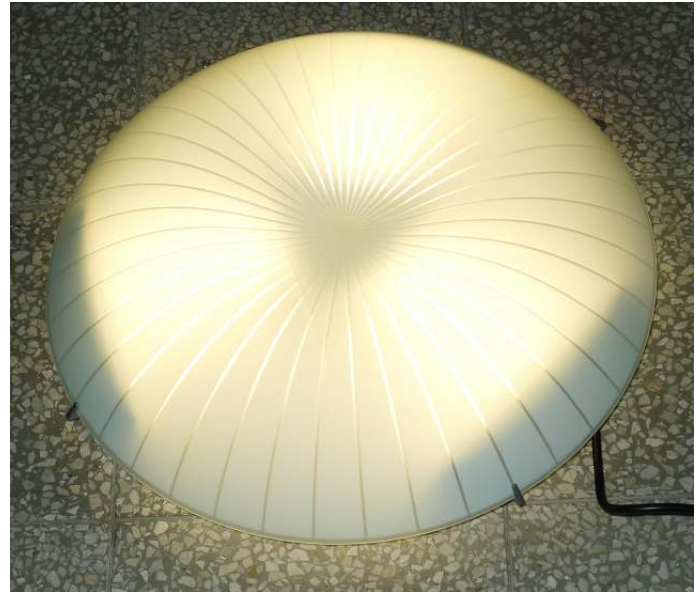
Vin=230 VAC

Pin=38 W max, PF > 0.97

Estimated Flux: > 3000 lm

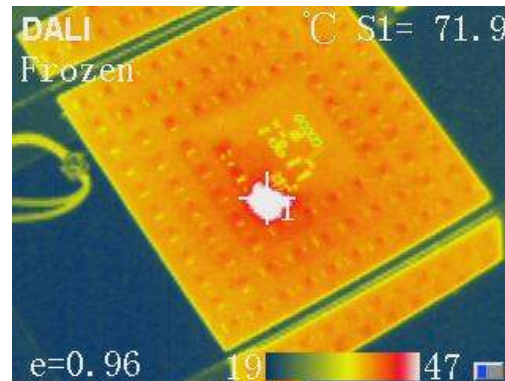
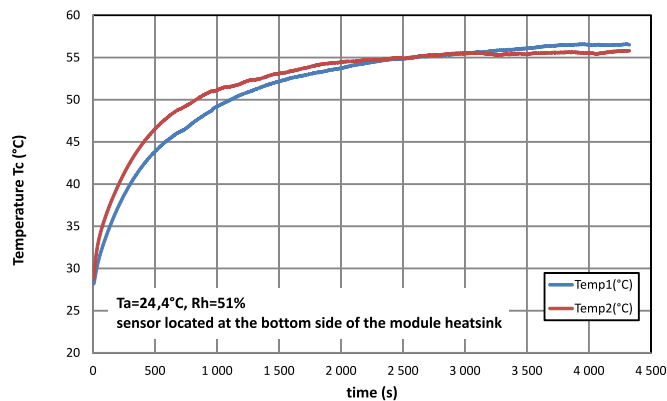
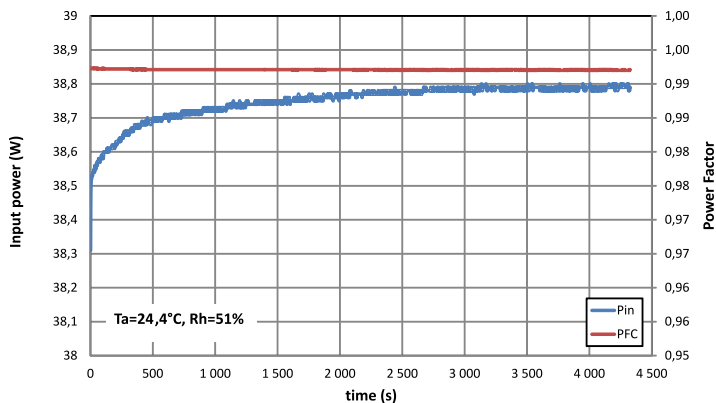
CCT= 3000K

Class I fixture, IP20



# AC LED Module I2W

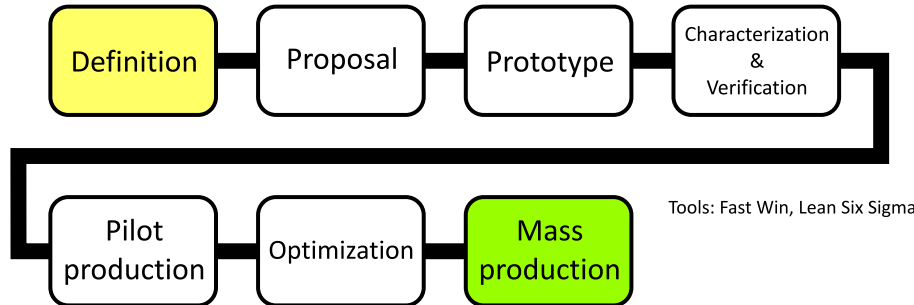
*Application example thermal results*



# AC LED Module CUSTOM

*no external driver all inside*

We are providing custom solution services according to your requirements. Just tell us what you need and we will find right solution for you.



## **Brief specification:**

Vin=110 or 230 VAC

Pin=8-16 W max, PF > 0.97

Dimensions: according your spec

Connection: according your spec

Shape: according your spec

## **Dimming options:**

- Phase dimming 10-100% (leading or trailing edge)
- analog 0-10V
- DALI
- smart functionality

## **LED selection:**

- **Samsung, Cree, Seoul, Liteon, Osram, LQ, Brightek**
- CCT : 3000-6500K
- CRI: 70-80



# Futuro Lighting

Designed and made-in Slovakia, EU



Contact:  
FuturoLighting, s.r.o.  
N. Teslu 5, 921 01 Piestany, SK  
web: [www.futurolighting.eu](http://www.futurolighting.eu)  
mail: [info@fulit.eu](mailto:info@fulit.eu)  
tel: +421 948 388 317