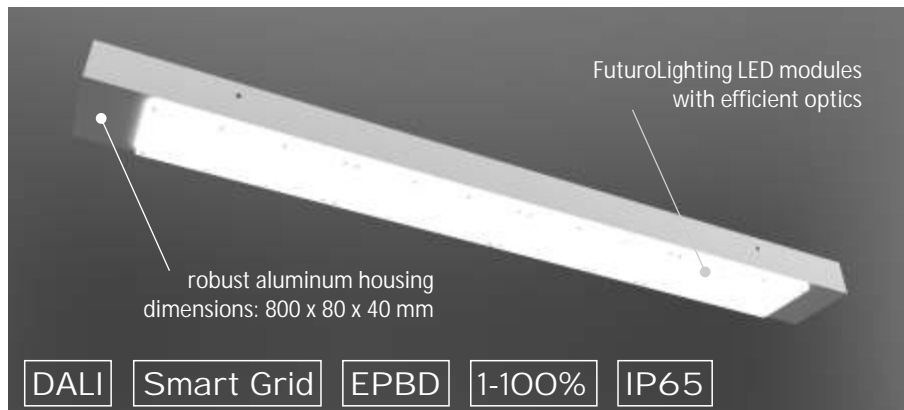




Futuro
Lighting

www.futurolighting.eu

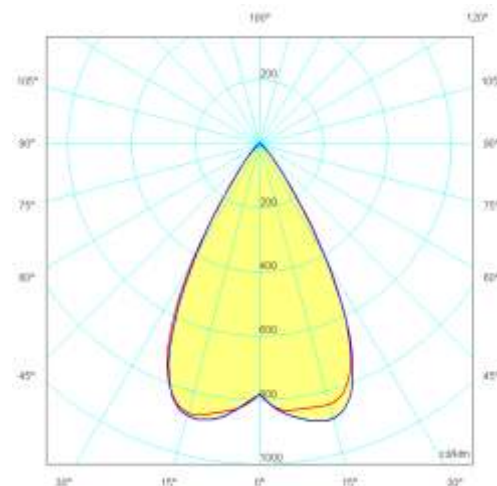


- Efficient optics with 53° or 96° radiation angle, appropriate for 3-8 m mounting heights, high bay applications
- Applied most recent LEDs,
- Low investment and maintenance costs,
- High efficiency, low consumption, < 300 mW standby,
- High lifetime, estimated above 60 000 hours,
- Maintenance free, environmental friendly,
- DALI interface for implementation to central control systems,
- Implemented Smart Grid for consumption monitoring,
- Compact dimensions, robust construction,
- Corrosion resistant,
- Designed by FuturoLighting, made-in Slovak Republic.

HighStick

Efficient high bay solution

- CCT 4000 K,
- CRI > 70, (> 91 on request)
- Efficiency > 105 lm/W,
- Lumen output > 9000 lm,
- Supply: 230V / 90W,
- IP 60, (IP 65 on request)
- Installation:
attached or suspended
- Dimensions: 950 x 80 x 40 mm,
- Weight: 4 kg, Material: Al





Futuro
Lighting

www.futurolighting.eu

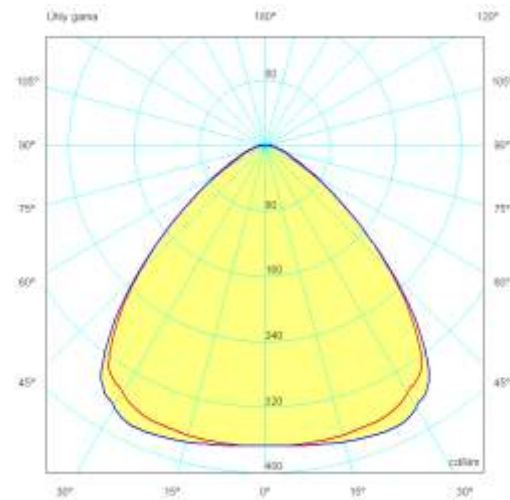


HighStick-M-LV

Efficient high bay solution

- CCT 4000 K,
- CRI > 70, (> 91 on request)
- Efficiency > 105 lm/W,
- Lumen output > 4000 lm,
- Supply: 48VDC / 45W,
- IP 43, (IP 65 on request)
- Installation:
attached or suspended
- Dimensions: 500 x 80 x 40 mm,
- Weight: 2,3 kg, Material: Al

- Efficient optics with 53° or 96° radiation angle, appropriate for 3-8 m mounting heights, high bay applications
- Applied most recent LEDs,
- Low investment and maintenance costs,
- High efficiency, LV 48 VDC distribution network
- High lifetime, estimated above 60 000 hours,
- Maintenance free, environmental friendly,
- PWM input,
- Implemented Smart Grid for consumption monitoring,
- Compact dimensions, robust construction,
- Corrosion resistant,
- Designed by FuturoLighting, made-in Slovak Republic.





Futuro
Lighting

www.futurolighting.eu

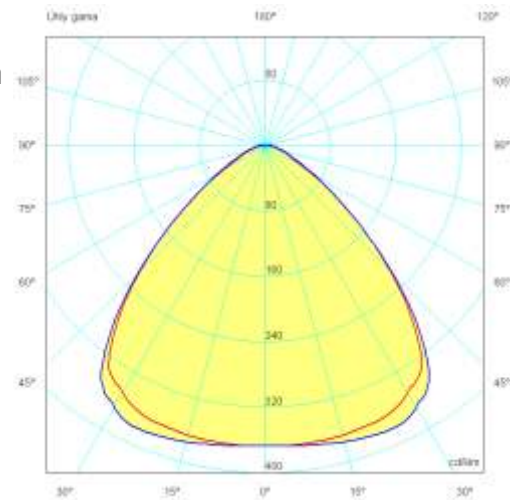


HighStick-M

Efficient high bay solution

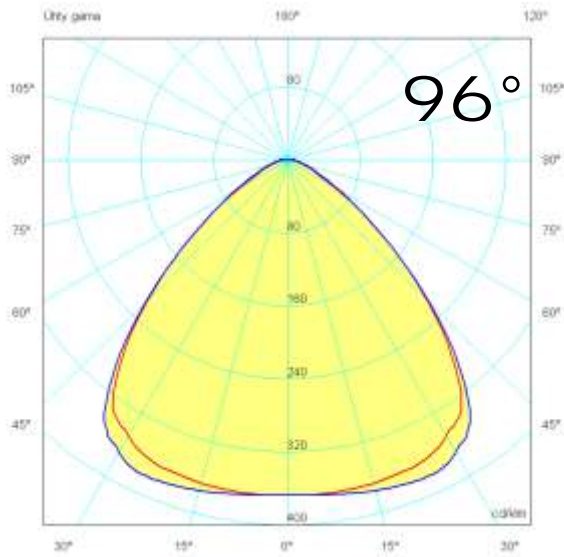
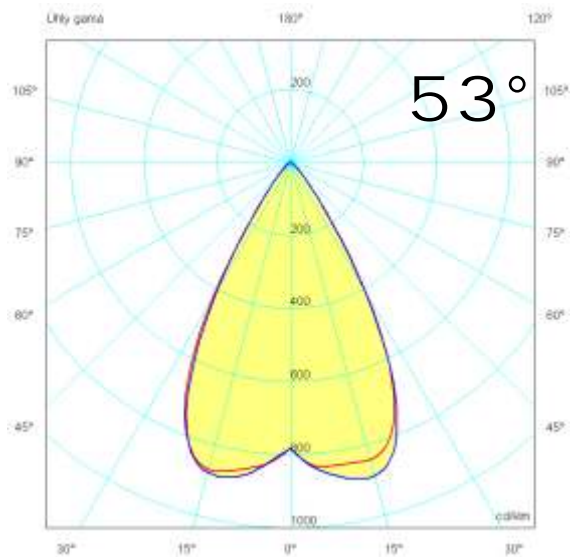
- ☀ CCT 4000 K,
- ☀ CRI > 70, (> 91 on request)
- ☀ Efficiency > 105 lm/W,
- ☀ Lumen output > 4000 lm,
- ☀ Supply: 230V / 50W,
- ☀ IP 53, (IP 65 on request)
- ☀ Installation:
attached or suspended
- ☀ Dimensions: 500 x 80 x 40 mm,
- ☀ Weight: 2,3 kg, Material: Al

- ☀ Efficient optics with 53° or 96° radiation angle, appropriate for 3-8 m mounting heights, high bay applications
- ☀ Applied most recent LEDs,
- ☀ Low investment and maintenance costs,
- ☀ High efficiency, low consumption, < 500 mW standby,
- ☀ High lifetime, estimated above 60 000 hours,
- ☀ Maintenance free, environmental friendly,
- ☀ DALI interface for implementation to central control systems,
- ☀ Implemented Smart Grid for consumption monitoring,
- ☀ Compact dimensions, robust construction,
- ☀ Corrosion resistant,
- ☀ Designed by FuturoLighting, made-in Slovak Republic.



Ordering code	radiation angle	out flux (lm)	CCT (K)	supply voltage (V)	Cons (W)	Intensity control	ctrl range	Dimm (mm)	weight (kg)
HighStick-53-4000	53°	>9000	4000	230 AC	98	DALI	1-100%	950x50x80	<4
HighStick-96-4000	96°	>9000	4000	230 AC	98	DALI	1-100%	950x50x80	<4
HighStick-53-4000-LV	53°	>9000	4000	48 DC	84	PWM	0-100%	950x50x80	<4
HighStick-96-4000-LV	96°	>9000	4000	48 DC	84	PWM	0-100%	950x50x80	<4
HighStick-M-53-4000	53°	>4500	4000	230 AC	45	DALI	1-100%	500x50x80	<2,3
HighStick-M-96-4000	96°	>4500	4000	230 AC	45	DALI	1-100%	500x50x80	<2,3
HighStick-M-53-4000-LV	53°	>4500	4000	48 DC	40	PWM	0-100%	500x50x80	<2,3
HighStick-M-96-4000-LV	96°	>4500	4000	48 DC	40	PWM	0-100%	500x50x80	<2,3

contact us for customized version



Pilot installation in EKOM, Piestany



Previous installation:

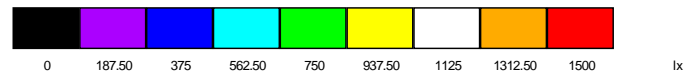
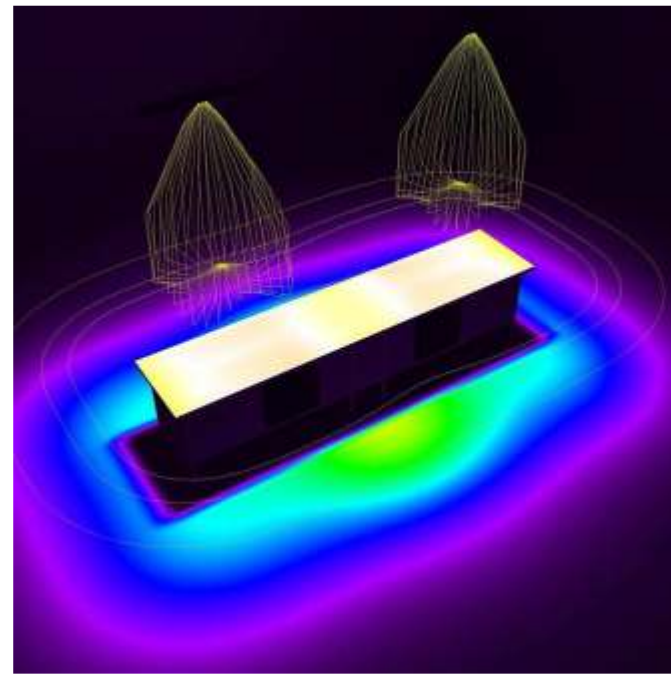
Fixtures: 2 x Modus, 2 x 36W T8, magnetic
 Power consumption: 192W
 Mounting height 2,5 m
 Problem:
 Intensity level insufficient



New installation:

2 x HighStick HCRI (CRI 96 typ)
 Power consumption: < 160W / dimming 1-100%
 Mounting height: 3 m
 Achieved: > 1000 lux on work plane
 CCT 4000K, CRI 96 (typ)
 Note: implemented microwave motion sensor

~50% higher
intensity



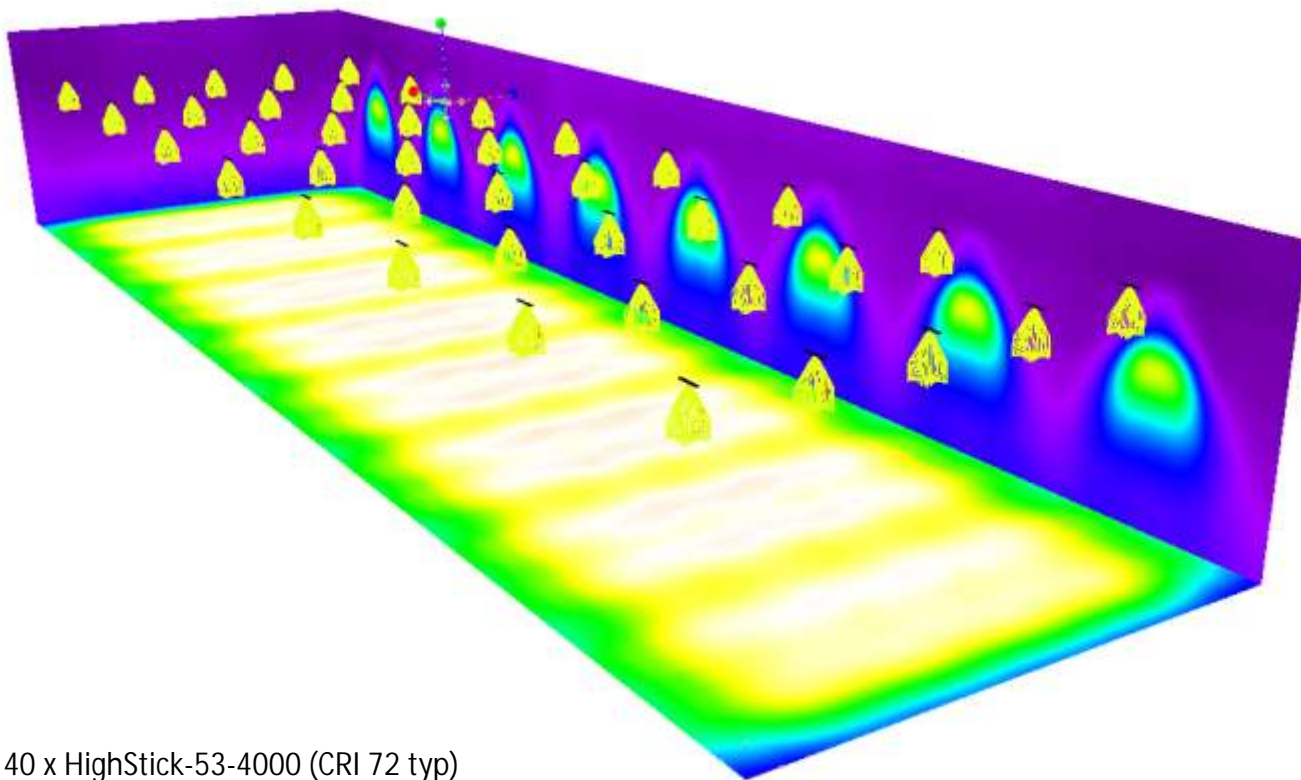


7 x HighStick-M-LV (CRI 72 typ)
Consumption: < 300W / dimming PWM 0-100%
Installation height 3 m
Reached: > 300 lux on the floor,
CCT 4000K, CRI 72 (typ)



Intensity control

Photometric simulation for hall 66 x 18 x 10 m



40 x HighStick-53-4000 (CRI 72 typ)

Consumption: < 4000W / dimming DALI 1-100%

Installation height 8 m

> 200 lux on the floor